



Lower Sand-bedded Reach (1)

- Photo points
- Flow Return
- Diversion
- Temperature Logger (CDFW)
- ◆ Temperature Logger (TID/MID)
- Canal (Modesto ID)
- Major Road
- ~ River Miles to Confluence with San Joaquin River

Photos are from aerial video, shot looking upstream, on 5/18/2012 with a flow measured at La Grange of 280 cfs.

Reach Name, Reach Number

- | | |
|---|--|
| Lower Sand-bedded Reach, 1 | Gravel Mining Reach, 5 |
| Urban Sand-bedded Reach, 2 | Dredger Tailing Reach, 6 |
| Upper Sand-bedded Reach, 3 | Dominant Spawning Reach, 7 |
| In-Channel Gravel Mining Reach, 4 | |

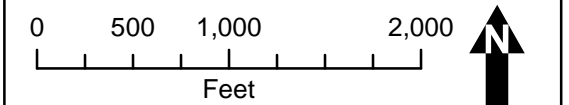


Figure 1

Don Pedro Project (FERC No.2299)

Map information was compiled from the best available sources. No warranty is made for its accuracy or completeness. Data Sources: Hydrography - USGS NHD, TID/MID; Roads - ESRI 9.3; ESRI, . Data is NAD83, State Plane CA Zone 3 U.S. Ft.



DRAFT MAP



Lower Sand-bedded Reach (2)

- Photo points
- Diversion
- Canal (Turlock ID)
- Major Road
- River Miles to Confluence with San Joaquin River

Photos are from aerial video, shot looking upstream, on 5/18/2012 with a flow measured at La Grange of 280 cfs.

Reach Name, Reach Number

- | | |
|---|--|
| Lower Sand-bedded Reach, 1 | Gravel Mining Reach, 5 |
| Urban Sand-bedded Reach, 2 | Dredger Tailing Reach, 6 |
| Upper Sand-bedded Reach, 3 | Dominant Spawning Reach, 7 |
| In-Channel Gravel Mining Reach, 4 | |

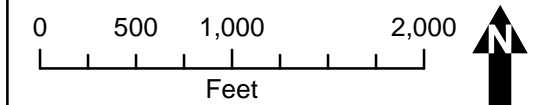


Figure 2

Don Pedro Project (FERC No.2299)

Map information was compiled from the best available sources. No warranty is made for its accuracy or completeness. Data Sources: Hydrography - USGS NHD, TID/MID; Roads - ESRI 9.3; ESRI, . Data is NAD83, State Plane CA Zone 3 U.S. Ft.



Lower Sand-bedded Reach (3)

- Photo points
- Flow Return
- Diversion
- Canal (Turlock ID)
- River Miles to Confluence with San Joaquin River

Photos are from aerial video, shot looking upstream, on 5/18/2012 with a flow measured at La Grange of 280 cfs.

Reach Name, Reach Number

- | | |
|-----------------------------------|----------------------------|
| Lower Sand-bedded Reach, 1 | Gravel Mining Reach, 5 |
| Urban Sand-bedded Reach, 2 | Dredger Tailing Reach, 6 |
| Upper Sand-bedded Reach, 3 | Dominant Spawning Reach, 7 |
| In-Channel Gravel Mining Reach, 4 | |

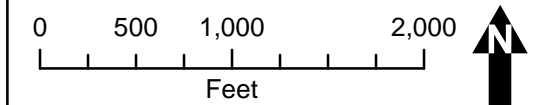
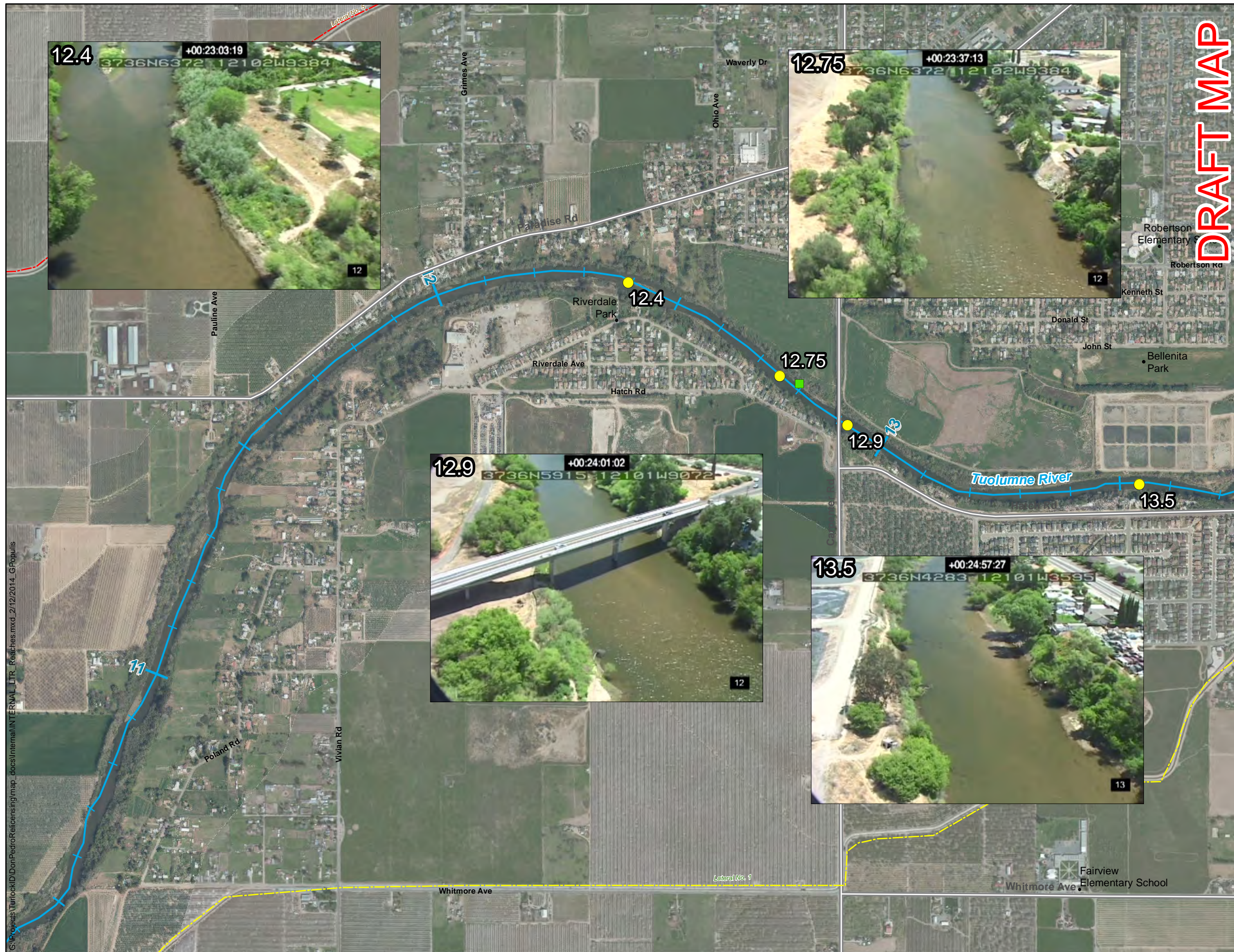


Figure 3

Don Pedro Project (FERC No.2299)

Map information was compiled from the best available sources. No warranty is made for its accuracy or completeness. Data Sources: Hydrography - USGS NHD, TID/MID; Roads - ESRI 9.3; ESRI, . Data is NAD83, State Plane CA Zone 3 U.S. Ft.



Urban Sand-bedded Reach (1)

- Photo points
- Temperature Logger (CDFW)
- Canal (Modesto ID)
- Canal (Turlock ID)
- Major Road
- ~ River Miles to Confluence with San Joaquin River

Photos are from aerial video, shot looking upstream, on 5/18/2012 with a flow measured at La Grange of 280 cfs.

Reach Name, Reach Number

- | | |
|---|--|
| Lower Sand-bedded Reach, 1 | Gravel Mining Reach, 5 |
| Urban Sand-bedded Reach, 2 | Dredger Tailing Reach, 6 |
| Upper Sand-bedded Reach, 3 | Dominant Spawning Reach, 7 |
| In-Channel Gravel Mining Reach, 4 | |

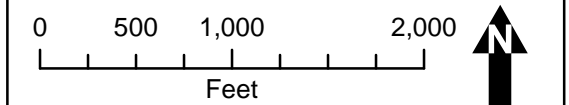
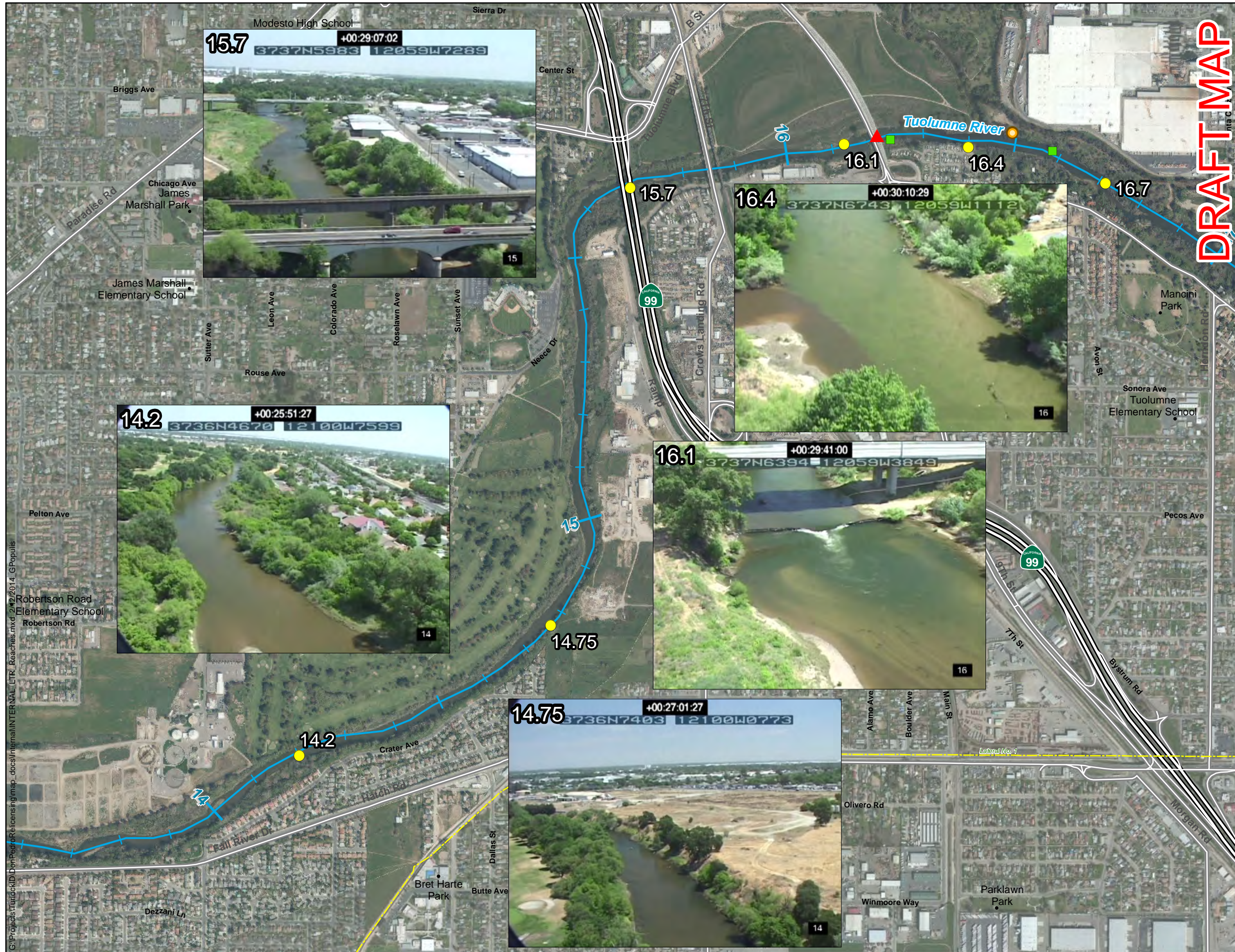


Figure 4

Don Pedro Project (FERC No.2299)

Map information was compiled from the best available sources. No warranty is made for its accuracy or completeness. Data Sources: Hydrography - USGS NHD, TID/MID; Roads - ESRI 9.3; ESRI, . Data is NAD83, State Plane CA Zone 3 U.S. Ft.



DRAFT MAP



Urban Sand-bedded Reach (2)

- Photo points
- Diversion
- Temperature Logger (CDFW)
- ▲ Streamflow Gage
- Canal (Turlock ID)
- Highway
- Major Road
- ~ River Miles to Confluence with San Joaquin River

Photos are from aerial video, shot looking upstream, on 5/18/2012 with a flow measured at La Grange of 280 cfs.

Reach Name, Reach Number

- | | |
|---|--|
| Lower Sand-bedded Reach, 1 | Gravel Mining Reach, 5 |
| Urban Sand-bedded Reach, 2 | Dredger Tailing Reach, 6 |
| Upper Sand-bedded Reach, 3 | Dominant Spawning Reach, 7 |
| In-Channel Gravel Mining Reach, 4 | |

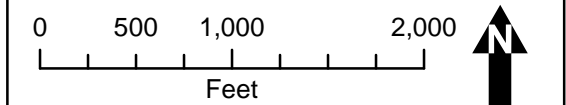


Figure 5

Don Pedro Project (FERC No.2299)

Map information was compiled from the best available sources. No warranty is made for its accuracy or completeness. Data Sources: Hydrography - USGS NHD, TID/MID; Roads - ESRI 9.3; ESRI, . Data is NAD83, State Plane CA Zone 3 U.S. Ft.



DRAFT MAP



Urban Sand-bedded Reach (3)

- Photo points
- Flow Return
- Temperature Logger (CDFW)
- ~ Canal (Modesto ID)
- ~ Canal (Turlock ID)
- Highway
- Major Road
- ~ River Miles to Confluence with San Joaquin River

Photos are from aerial video, shot looking upstream, on 5/18/2012 with a flow measured at La Grange of 280 cfs.

Reach Name, Reach Number

- | | |
|---|--|
| Lower Sand-bedded Reach, 1 | Gravel Mining Reach, 5 |
| Urban Sand-bedded Reach, 2 | Dredger Tailing Reach, 6 |
| Upper Sand-bedded Reach, 3 | Dominant Spawning Reach, 7 |
| In-Channel Gravel Mining Reach, 4 | |

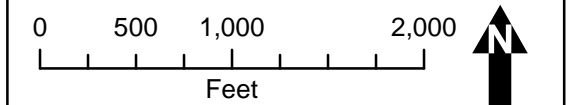
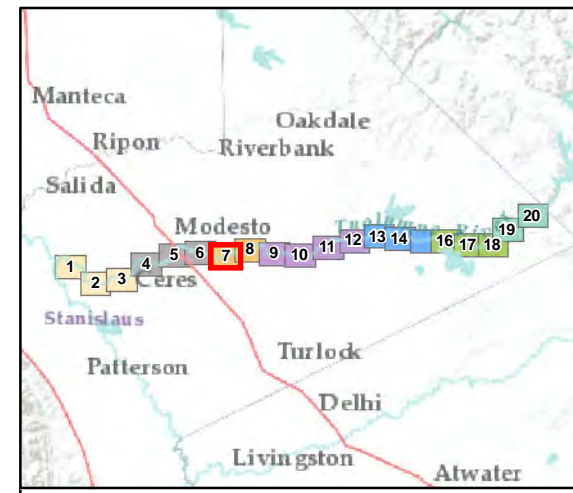


Figure 6

Don Pedro Project (FERC No.2299)

Map information was compiled from the best available sources. No warranty is made for its accuracy or completeness. Data Sources: Hydrography - USGS NHD, TID/MID; Roads - ESRI 9.3; ESRI, . Data is NAD83, State Plane CA Zone 3 U.S. Ft.



Upper Sand-bedded Reach (1)

- Photo points
- Flow Return
- Temperature Logger (CDFW)
- Canal (Modesto ID)
- Canal (Turlock ID)
- Major Road
- River Miles to Confluence with San Joaquin River

Photos are from aerial video, shot looking upstream, on 5/18/2012 with a flow measured at La Grange of 280 cfs.

Reach Name, Reach Number

 Lower Sand-bedded Reach, 1	 Gravel Mining Reach, 5
 Urban Sand-bedded Reach, 2	 Dredger Tailing Reach, 6
 Upper Sand-bedded Reach, 3	 Dominant Spawning Reach, 7
 In-Channel Gravel Mining Reach, 4	

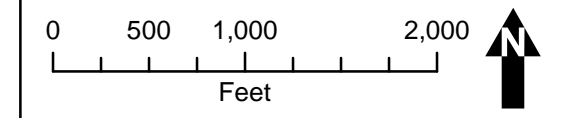
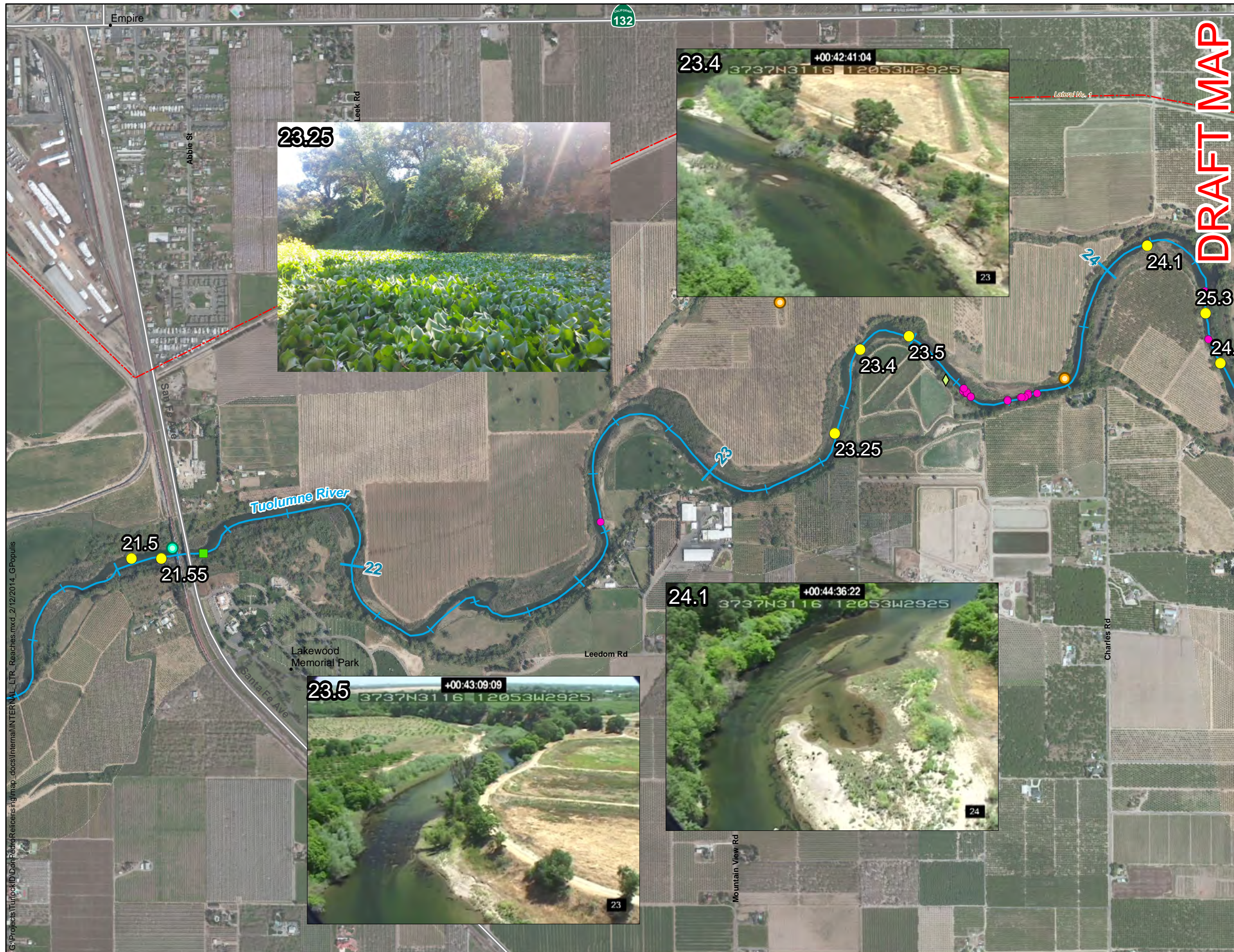


Figure 7
Don Pedro Project (FERC No.2299)

Map information was compiled from the best available sources. No warranty is made for its accuracy or completeness.
Data Sources: Hydrography - USGS NHD, TID/MID;
Roads - ESRI 9.3; ESRI, .
Data is NAD83, State Plane CA Zone 3 U.S. Ft.



DRAFT MAP



Upper Sand-bedded Reach (2)

- Photo points
- Salmon Redd (2012)
- Flow Return
- Diversion
- Temperature Logger (CDFW)
- ◆ Temperature Logger (TID/MID)
- Canal (Modesto ID)
- Major Road
- River Miles to Confluence with San Joaquin River

Photos are from aerial video, shot looking upstream, on 5/18/2012 with a flow measured at La Grange of 280 cfs.

Reach Name, Reach Number

 Lower Sand-bedded Reach, 1	 Gravel Mining Reach, 5
 Urban Sand-bedded Reach, 2	 Dredger Tailing Reach, 6
 Upper Sand-bedded Reach, 3	 Dominant Spawning Reach, 7
 In-Channel Gravel Mining Reach, 4	

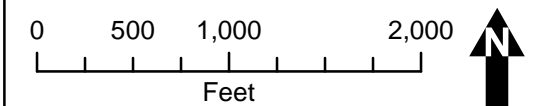
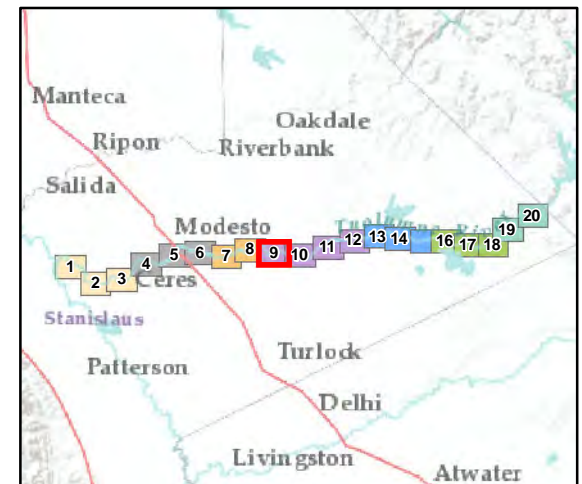


Figure 8

Don Pedro Project (FERC No.2299)

Map information was compiled from the best available sources. No warranty is made for its accuracy or completeness. Data Sources: Hydrography - USGS NHD, TID/MID; Roads - ESRI 9.3; ESRI, . Data is NAD83, State Plane CA Zone 3 U.S. Ft.



In-Channel Gravel Mining Reach (1)

- Photo points
- Salmon Redd (2012)
- Diversion
- Temperature Logger (CDFW)
- Special Run Pools
- Canal (Modesto ID)
- Canal (Turlock ID)
- Major Road
- River Miles to Confluence with San Joaquin River

Photos are from aerial video, shot looking upstream, on 5/18/2012 with a flow measured at La Grange of 280 cfs.

Reach Name, Reach Number

- | | |
|---|--|
| Lower Sand-bedded Reach, 1 | Gravel Mining Reach, 5 |
| Urban Sand-bedded Reach, 2 | Dredger Tailing Reach, 6 |
| Upper Sand-bedded Reach, 3 | Dominant Spawning Reach, 7 |
| In-Channel Gravel Mining Reach, 4 | |

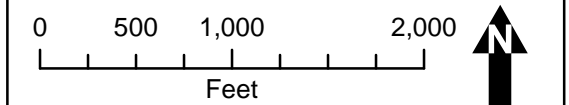


Figure 9

Don Pedro Project (FERC No.2299)

Map information was compiled from the best available sources. No warranty is made for its accuracy or completeness. Data Sources: Hydrography - USGS NHD, TID/MID; Roads - ESRI 9.3; ESRI, . Data is NAD83, State Plane CA Zone 3 U.S. Ft.



In-Channel Gravel Mining Reach (2)

- Photo points
- Salmon Redd (2012)
- Diversion
- Special Run Pools
- Canal (Modesto ID)
- Canal (Turlock ID)
- River Miles to Confluence with San Joaquin River

Photos are from aerial video, shot looking upstream, on 5/18/2012 with a flow measured at La Grange of 280 cfs.

Reach Name, Reach Number

- | | |
|---|--|
| Lower Sand-bedded Reach, 1 | Gravel Mining Reach, 5 |
| Urban Sand-bedded Reach, 2 | Dredger Tailing Reach, 6 |
| Upper Sand-bedded Reach, 3 | Dominant Spawning Reach, 7 |
| In-Channel Gravel Mining Reach, 4 | |

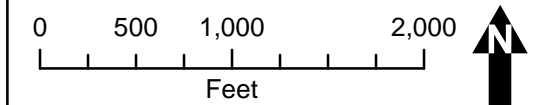
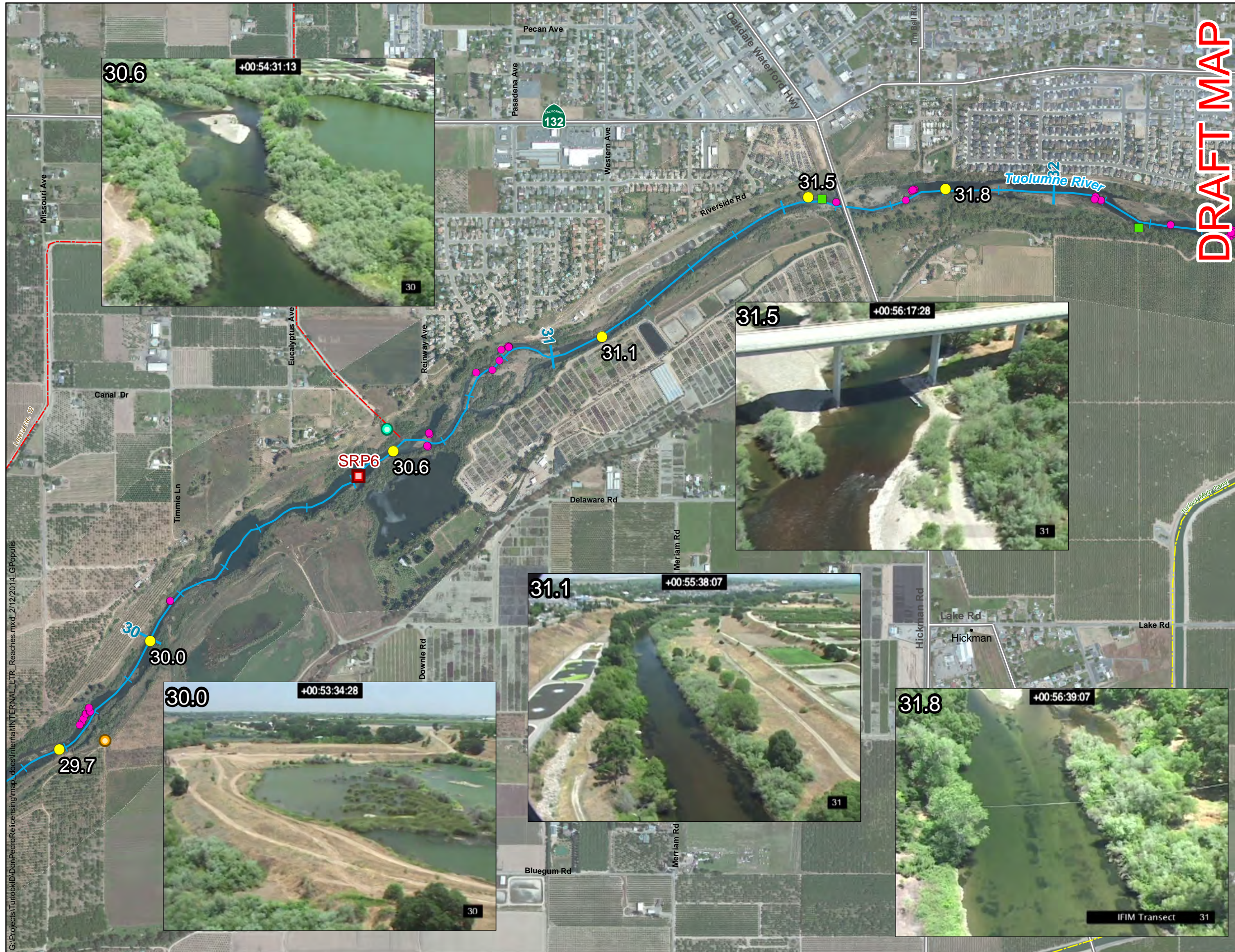


Figure 10

Don Pedro Project (FERC No.2299)

Map information was compiled from the best available sources. No warranty is made for its accuracy or completeness. Data Sources: Hydrography - USGS NHD, TID/MID; Roads - ESRI 9.3; ESRI, . Data is NAD83, State Plane CA Zone 3 U.S. Ft.



In-Channel Gravel Mining Reach (3)

- Photo points
- Salmon Redd (2012)
- Flow Return
- Diversion
- Temperature Logger (CDFW)
- Special Run Pools
- Canal (Modesto ID)
- Canal (Turlock ID)
- Major Road
- River Miles to Confluence with San Joaquin River

Photos are from aerial video, shot looking upstream, on 5/18/2012 with a flow measured at La Grange of 280 cfs.

Reach Name, Reach Number

 Lower Sand-bedded Reach, 1	 Gravel Mining Reach, 5
 Urban Sand-bedded Reach, 2	 Dredger Tailing Reach, 6
 Upper Sand-bedded Reach, 3	 Dominant Spawning Reach, 7
 In-Channel Gravel Mining Reach, 4	

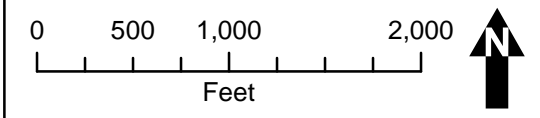
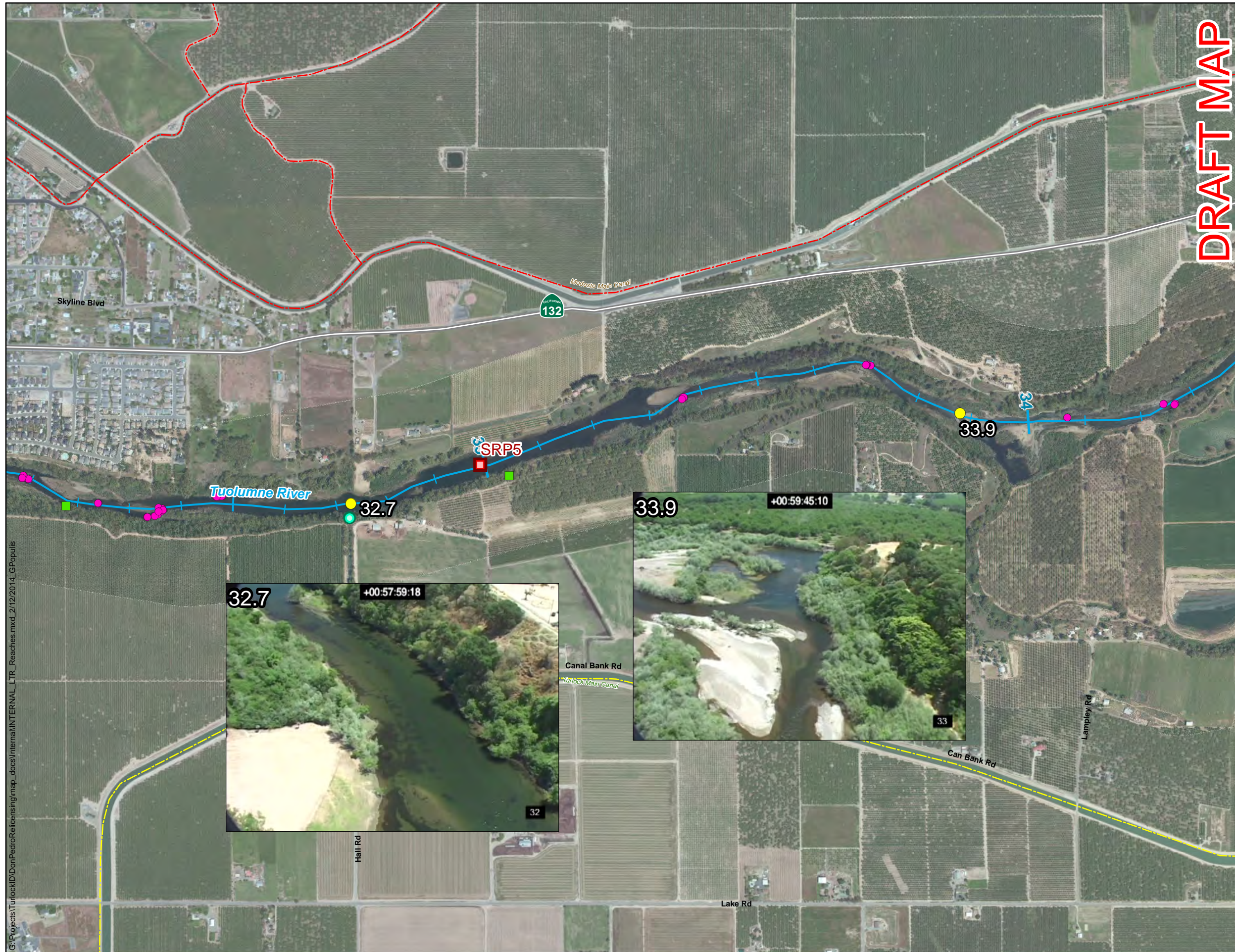


Figure 11
Don Pedro Project (FERC No.2299)

Map information was compiled from the best available sources. No warranty is made for its accuracy or completeness.
Data Sources: Hydrography - USGS NHD, TID/MID;
Roads - ESRI 9.3; ESRI, .
Data is NAD83, State Plane CA Zone 3 U.S. Ft.



DRAFT MAP



In-Channel Gravel Mining Reach (4)

- Photo points
- Salmon Redd (2012)
- Flow Return
- Temperature Logger (CDFW)
- Special Run Pools
- Canal (Modesto ID)
- Canal (Turlock ID)
- Major Road
- River Miles to Confluence with San Joaquin River

Photos are from aerial video, shot looking upstream, on 5/18/2012 with a flow measured at La Grange of 280 cfs.

Reach Name, Reach Number

- | | |
|---|--|
| Lower Sand-bedded Reach, 1 | Gravel Mining Reach, 5 |
| Urban Sand-bedded Reach, 2 | Dredger Tailing Reach, 6 |
| Upper Sand-bedded Reach, 3 | Dominant Spawning Reach, 7 |
| In-Channel Gravel Mining Reach, 4 | |

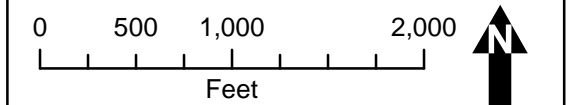


Figure 12

Don Pedro Project (FERC No.2299)

Map information was compiled from the best available sources. No warranty is made for its accuracy or completeness. Data Sources: Hydrography - USGS NHD, TID/MID; Roads - ESRI 9.3; ESRI, . Data is NAD83, State Plane CA Zone 3 U.S. Ft.



Gravel Mining Reach (1)

- Photo points
- Salmon Redd (2012)
- Temperature Logger (CDFW)
- Special Run Pools
- Canal (Modesto ID)
- Canal (Turlock ID)
- Major Road
- River Miles to Confluence with San Joaquin River

Photos are from aerial video, shot looking upstream, on 5/18/2012 with a flow measured at La Grange of 280 cfs.

Reach Name, Reach Number

- | | |
|---|--|
| Lower Sand-bedded Reach, 1 | Gravel Mining Reach, 5 |
| Urban Sand-bedded Reach, 2 | Dredger Tailing Reach, 6 |
| Upper Sand-bedded Reach, 3 | Dominant Spawning Reach, 7 |
| In-Channel Gravel Mining Reach, 4 | |

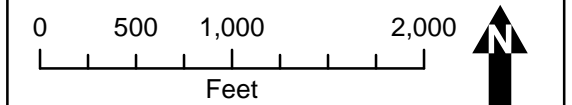


Figure 13

Don Pedro Project (FERC No.2299)

Map information was compiled from the best available sources. No warranty is made for its accuracy or completeness. Data Sources: Hydrography - USGS NHD, TID/MID; Roads - ESRI 9.3; ESRI, . Data is NAD83, State Plane CA Zone 3 U.S. Ft.



DRAFT MAP



Gravel Mining Reach (2)

- Photo points
- Salmon Redd (2012)
- Temperature Logger (CDFW)
- ◆ Temperature Logger (TID/MID)
- Special Run Pools
- Canal (Modesto ID)
- Canal (Turlock ID)
- Major Road
- River Miles to Confluence with San Joaquin River

Photos are from aerial video, shot looking upstream, on 5/18/2012 with a flow measured at La Grange of 280 cfs.

Reach Name, Reach Number

 Lower Sand-bedded Reach, 1	 Gravel Mining Reach, 5
 Urban Sand-bedded Reach, 2	 Dredger Tailing Reach, 6
 Upper Sand-bedded Reach, 3	 Dominant Spawning Reach, 7
 In-Channel Gravel Mining Reach, 4	

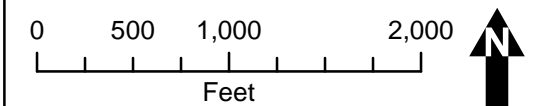


Figure 14
Don Pedro Project (FERC No.2299)

Map information was compiled from the best available sources. No warranty is made for its accuracy or completeness. Data Sources: Hydrography - USGS NHD, TID/MID; Roads - ESRI 9.3; ESRI, . Data is NAD83, State Plane CA Zone 3 U.S. Ft.



DRAFT MAP



Gravel Mining Reach (3)

- Photo points
- Salmon Redd (2012)
- Diversion
- Temperature Logger (CDFW)
- ◆ Temperature Logger (TID/MID)
- Canal (Modesto ID)
- Canal (Turlock ID)
- Major Road
- River Miles to Confluence with San Joaquin River

Photos are from aerial video, shot looking upstream, on 5/18/2012 with a flow measured at La Grange of 280 cfs.

Reach Name, Reach Number

- | | |
|---|--|
| Lower Sand-bedded Reach, 1 | Gravel Mining Reach, 5 |
| Urban Sand-bedded Reach, 2 | Dredger Tailing Reach, 6 |
| Upper Sand-bedded Reach, 3 | Dominant Spawning Reach, 7 |
| In-Channel Gravel Mining Reach, 4 | |

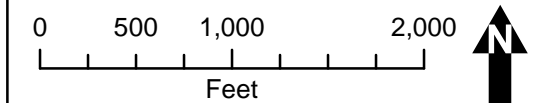


Figure 15

Don Pedro Project (FERC No.2299)

Map information was compiled from the best available sources. No warranty is made for its accuracy or completeness. Data Sources: Hydrography - USGS NHD, TID/MID; Roads - ESRI 9.3; ESRI, . Data is NAD83, State Plane CA Zone 3 U.S. Ft.



Dredger Tailing Reach (1)

- Photo points
- Salmon Redd (2012)
- Temperature Logger (CDFW)
- Canal (Modesto ID)
- Canal (Turlock ID)
- Major Road
- River Miles to Confluence with San Joaquin River

Photos are from aerial video, shot looking upstream, on 5/18/2012 with a flow measured at La Grange of 280 cfs.

Reach Name, Reach Number

- | | |
|---|--|
| Lower Sand-bedded Reach, 1 | Gravel Mining Reach, 5 |
| Urban Sand-bedded Reach, 2 | Dredger Tailing Reach, 6 |
| Upper Sand-bedded Reach, 3 | Dominant Spawning Reach, 7 |
| In-Channel Gravel Mining Reach, 4 | |

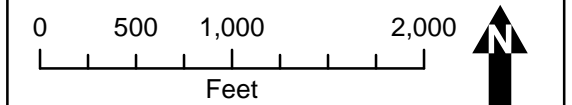


Figure 16

Don Pedro Project (FERC No.2299)

Map information was compiled from the best available sources. No warranty is made for its accuracy or completeness. Data Sources: Hydrography - USGS NHD, TID/MID; Roads - ESRI 9.3; ESRI, . Data is NAD83, State Plane CA Zone 3 U.S. Ft.



DRAFT MAP



Dredger Tailing Reach (2)

- Photo points
- Salmon Redd (2012)
- Diversion
- Temperature Logger (CDFW)
- ◆ Temperature Logger (TID/MID)
- Canal (Modesto ID)
- Major Road
- River Miles to Confluence with San Joaquin River

Photos are from aerial video, shot looking upstream, on 5/18/2012 with a flow measured at La Grange of 280 cfs.

- Reach Name, Reach Number**
- | | |
|---|--|
| Lower Sand-bedded Reach, 1 | Gravel Mining Reach, 5 |
| Urban Sand-bedded Reach, 2 | Dredger Tailing Reach, 6 |
| Upper Sand-bedded Reach, 3 | Dominant Spawning Reach, 7 |
| In-Channel Gravel Mining Reach, 4 | |

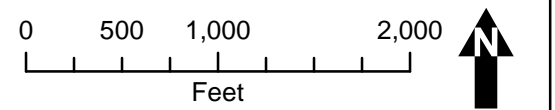
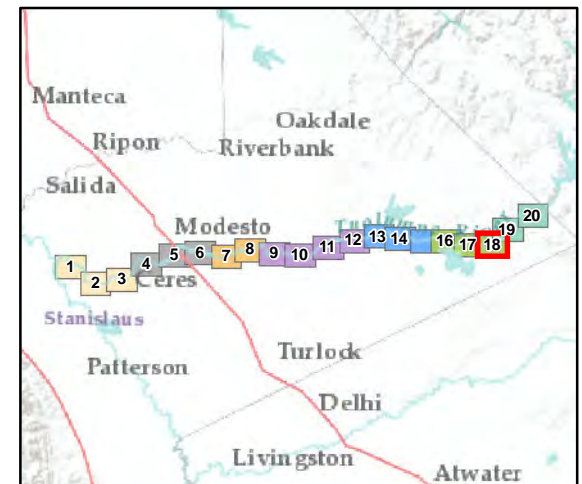
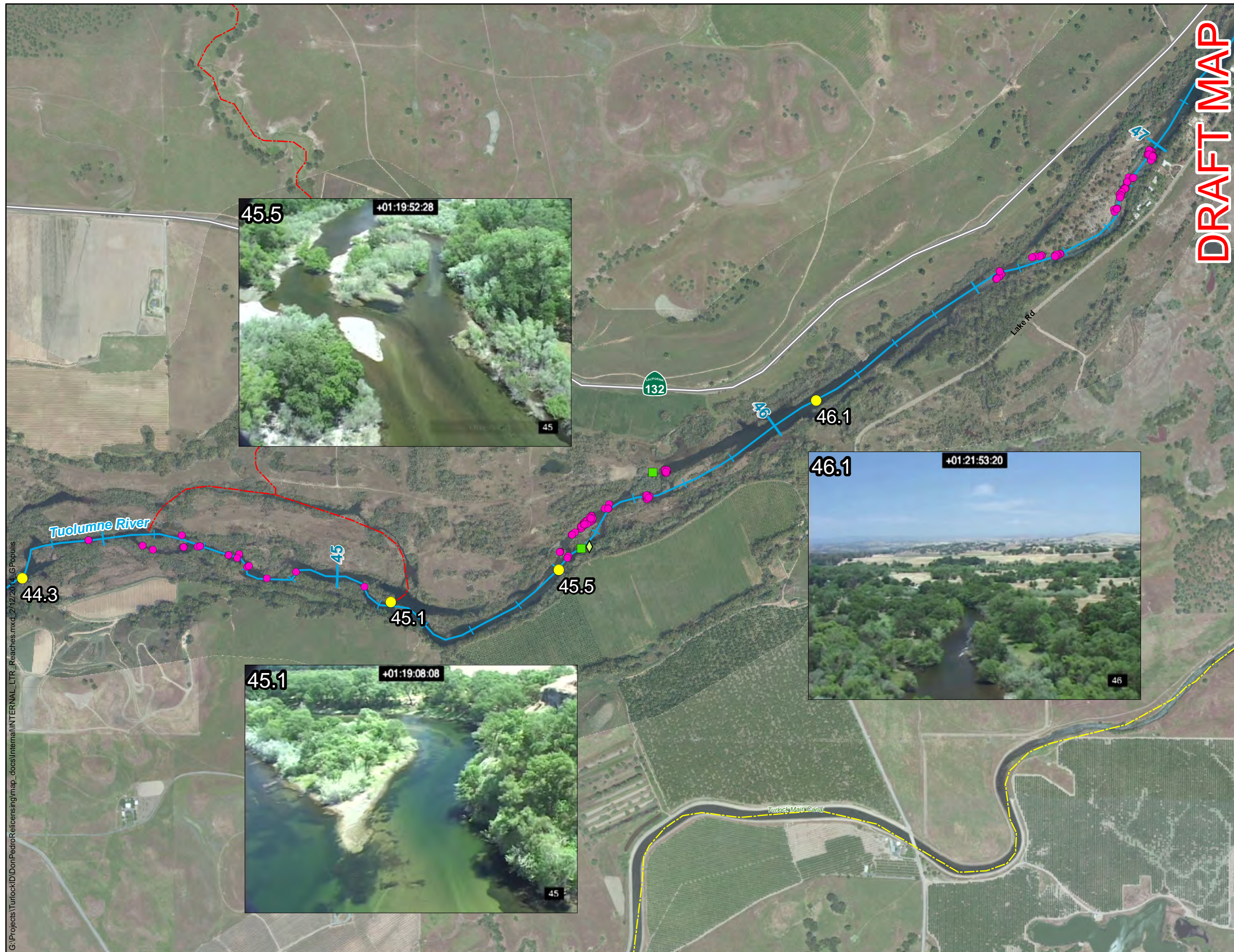


Figure 17
Don Pedro Project (FERC No.2299)

Map information was compiled from the best available sources. No warranty is made for its accuracy or completeness. Data Sources: Hydrography - USGS NHD, TID/MID; Roads - ESRI 9.3; ESRI, . Data is NAD83, State Plane CA Zone 3 U.S. Ft.



Dredger Tailing Reach (3)

- Photo points
- Salmon Redd (2012)
- Temperature Logger (CDFW)
- ◆ Temperature Logger (TID/MID)
- Canal (Modesto ID)
- Canal (Turlock ID)
- == Major Road
- ~ River Miles to Confluence with San Joaquin River

Photos are from aerial video, shot looking upstream, on 5/18/2012 with a flow measured at La Grange of 280 cfs.

Reach Name, Reach Number

 Lower Sand-bedded Reach, 1	 Gravel Mining Reach, 5
 Urban Sand-bedded Reach, 2	 Dredger Tailing Reach, 6
 Upper Sand-bedded Reach, 3	 Dominant Spawning Reach, 7
 In-Channel Gravel Mining Reach, 4	

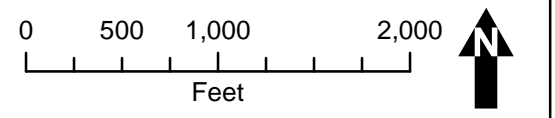
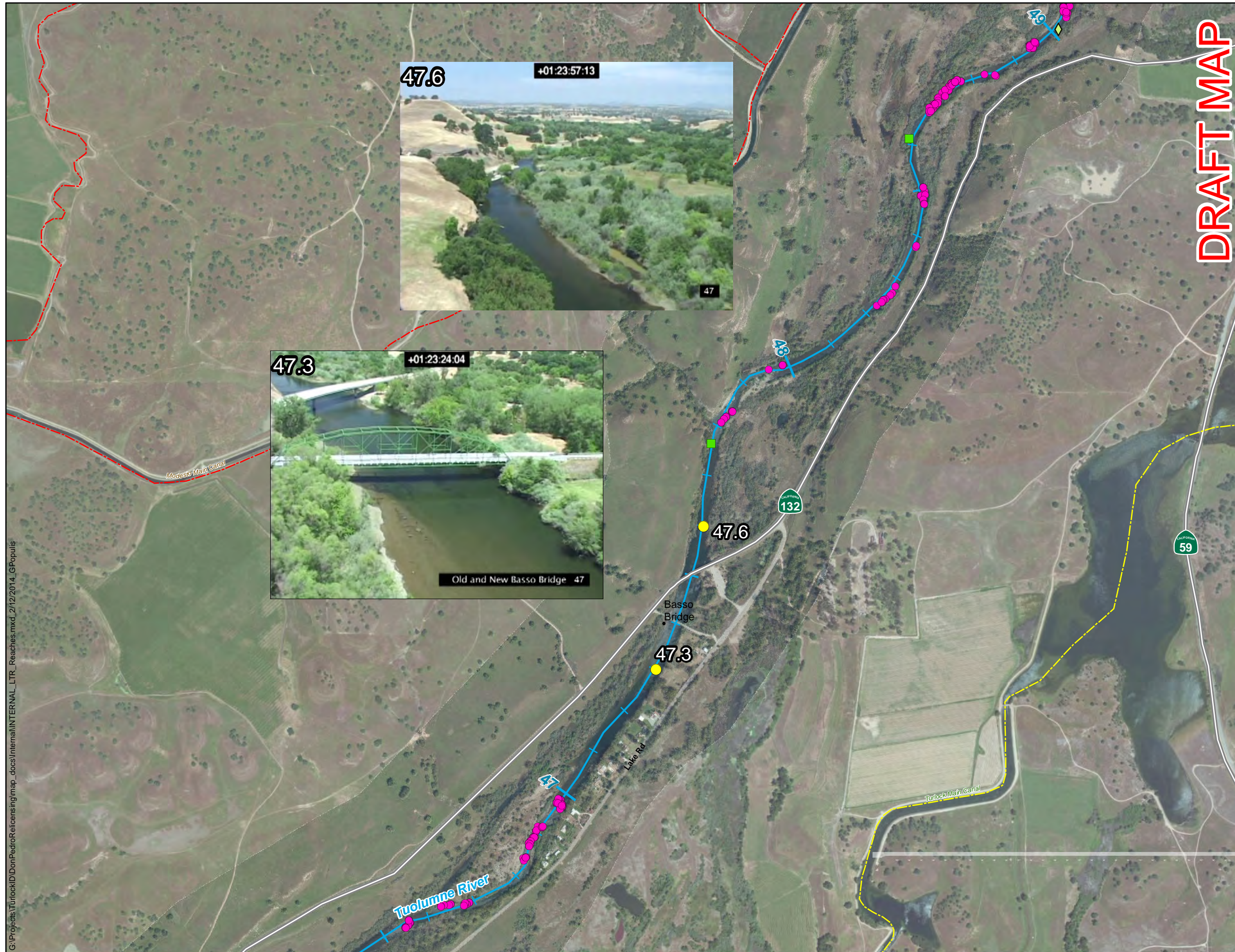


Figure 18
Don Pedro Project (FERC No.2299)

Map information was compiled from the best available sources. No warranty is made for its accuracy or completeness.
Data Sources: Hydrography - USGS NHD, TID/MID;
Roads - ESRI 9.3; ESRI, .
Data is NAD83, State Plane CA Zone 3 U.S. Ft.



DRAFT MAP



Dominant Spawning Reach (1)

- Photo points
- Salmon Redd (2012)
- Temperature Logger (CDFW)
- ◆ Temperature Logger (TID/MID)
- Canal (Modesto ID)
- Canal (Turlock ID)
- Major Road
- River Miles to Confluence with San Joaquin River

Photos are from aerial video, shot looking upstream, on 5/18/2012 with a flow measured at La Grange of 280 cfs.

Reach Name, Reach Number

- | | |
|---|--|
| Lower Sand-bedded Reach, 1 | Gravel Mining Reach, 5 |
| Urban Sand-bedded Reach, 2 | Dredger Tailing Reach, 6 |
| Upper Sand-bedded Reach, 3 | Dominant Spawning Reach, 7 |
| In-Channel Gravel Mining Reach, 4 | |

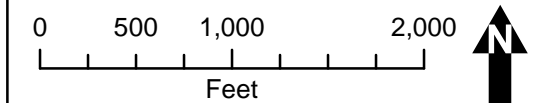
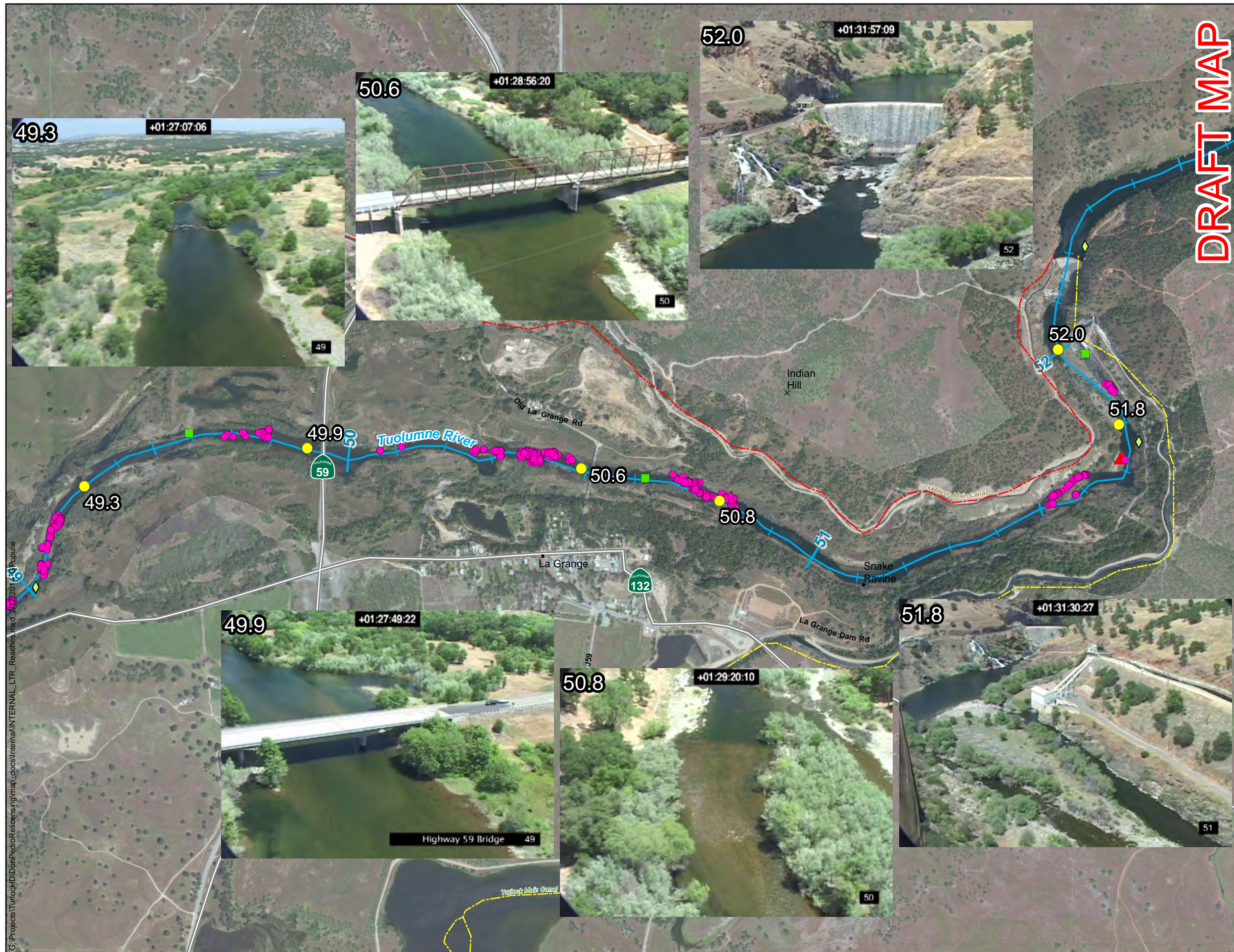


Figure 19

Don Pedro Project (FERC No.2299)

Map information was compiled from the best available sources. No warranty is made for its accuracy or completeness. Data Sources: Hydrography - USGS NHD, TID/MID; Roads - ESRI 9.3; ESRI, . Data is NAD83, State Plane CA Zone 3 U.S. Ft.



DRAFT MAP



Dominant Spawning Reach (2)

- Photo points
- Salmon Redd (2012)
- Temperature Logger (CDFW)
- ◆ Temperature Logger (TID/MID)
- ▲ Streamflow Gage
- Canal (Modesto ID)
- Canal (Turlock ID)
- == Major Road
- ~ River Miles to Confluence with San Joaquin River

Photos are from aerial video, shot looking upstream, on 5/18/2012 with a flow measured at La Grange of 280 cfs.

Reach Name, Reach Number

- | | |
|---|--|
| Lower Sand-bedded Reach, 1 | Gravel Mining Reach, 5 |
| Urban Sand-bedded Reach, 2 | Dredger Tailing Reach, 6 |
| Upper Sand-bedded Reach, 3 | Dominant Spawning Reach, 7 |
| In-Channel Gravel Mining Reach, 4 | |

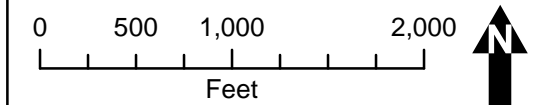


Figure 20

Don Pedro Project (FERC No.2299)

Map information was compiled from the best available sources. No warranty is made for its accuracy or completeness. Data Sources: Hydrography - USGS NHD, TID/MID; Roads - ESRI 9.3; ESRI, . Data is NAD83, State Plane CA Zone 3 U.S. Ft.